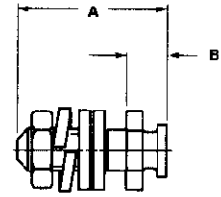
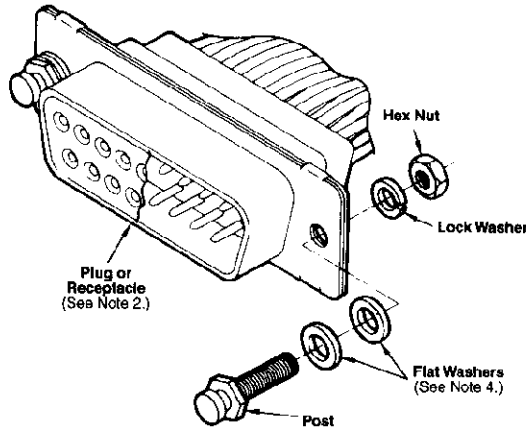


**Hardware** (Continued)

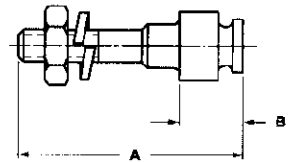
**Locking Post Assembly**

**Material and Finish:**

**All Parts**—Cold rolled steel, zinc plated clear or yellow chromate



Part No. 206514-1



Part No. 747242-1

Thread Size	Locking Post Finish	Dimensions		Locking Post Kit Number (See Note 4)	
		A	B	Individual	Bulk Packed*
4-40	Yellow Chromate	.410	.110	206514-1	206514-3
		10.41	2.79		
	.560	.110	206514-6	206514-7	
	14.22	2.79			
2-56	Yellow Chromate	.615	.172	747242-1	—
		15.62	4.37		
	Clear Chromate	.615	.172	747242-3	747242-4
		15.62	4.37		

\*Each part is individually bulk packed for multiple kit orders.

- Notes:**
1. All parts are packaged unassembled.
  2. Each kit is comprised of two complete assemblies, as illustrated above.
  3. For front panel mounting, it is recommended that a shim be used between the connector flange and panel to prevent bowing of the flange.
  4. Locking posts with 2-56 thread size are to be used with cable clamps with mounting flanges. Locking posts with 4-40 thread size can be used with all other cable clamps.
  5. Locking posts mate with slide latches.